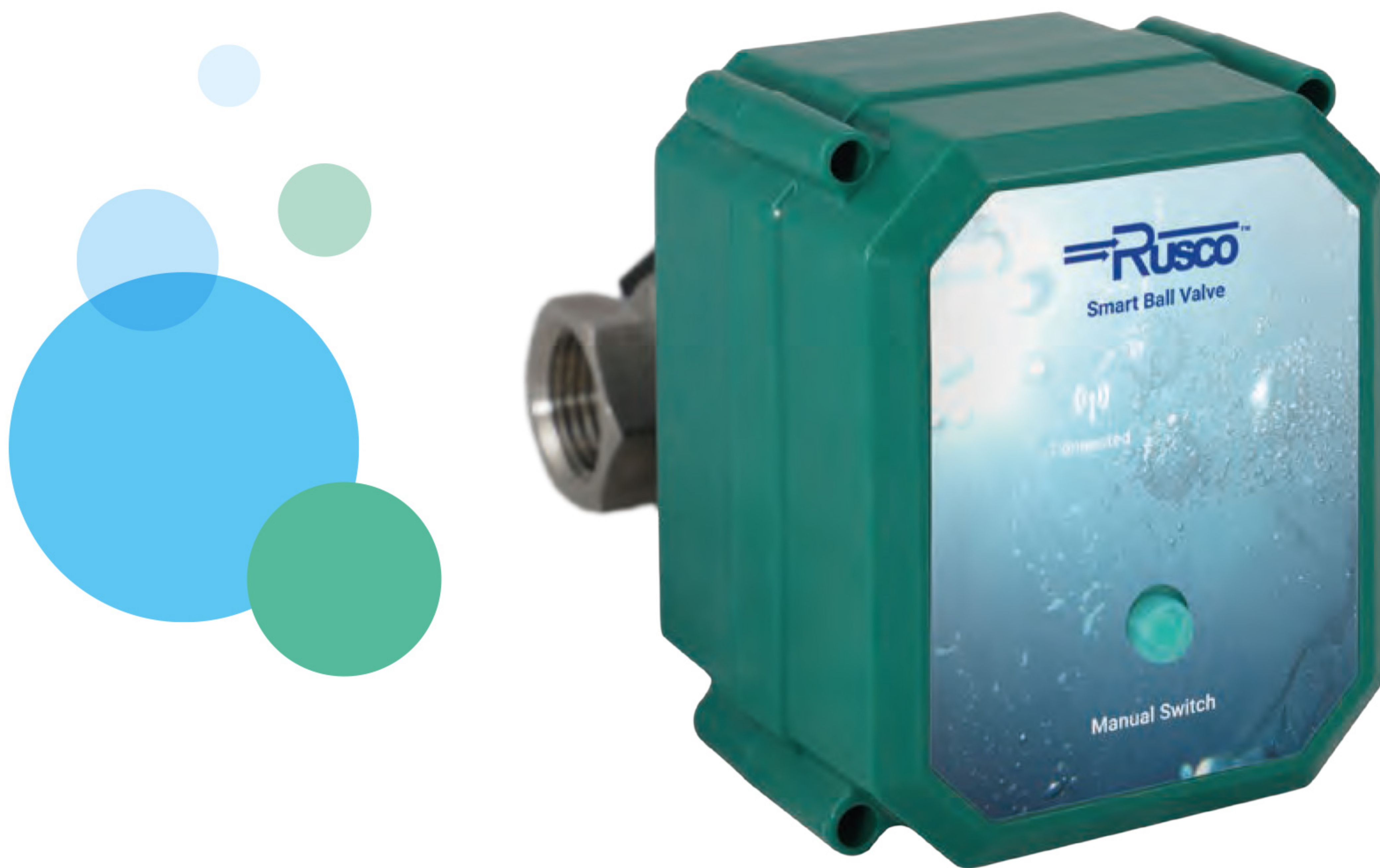




# Smart Ball Valve

User Manual



# RUSCO SMART BALL VALVE

## SPECIFICATIONS

Model No: SBV  
DC 5V/2A power supply  
Waterproof: IP67  
Materials: SS304 & NEMA 4  
Valve Size: 1/2", 3/4", 1"  
Screw Thread: NPT  
Max Pressure: 145 PSI  
Input Voltage: DC5V

## FREQUENCY OF TIMING

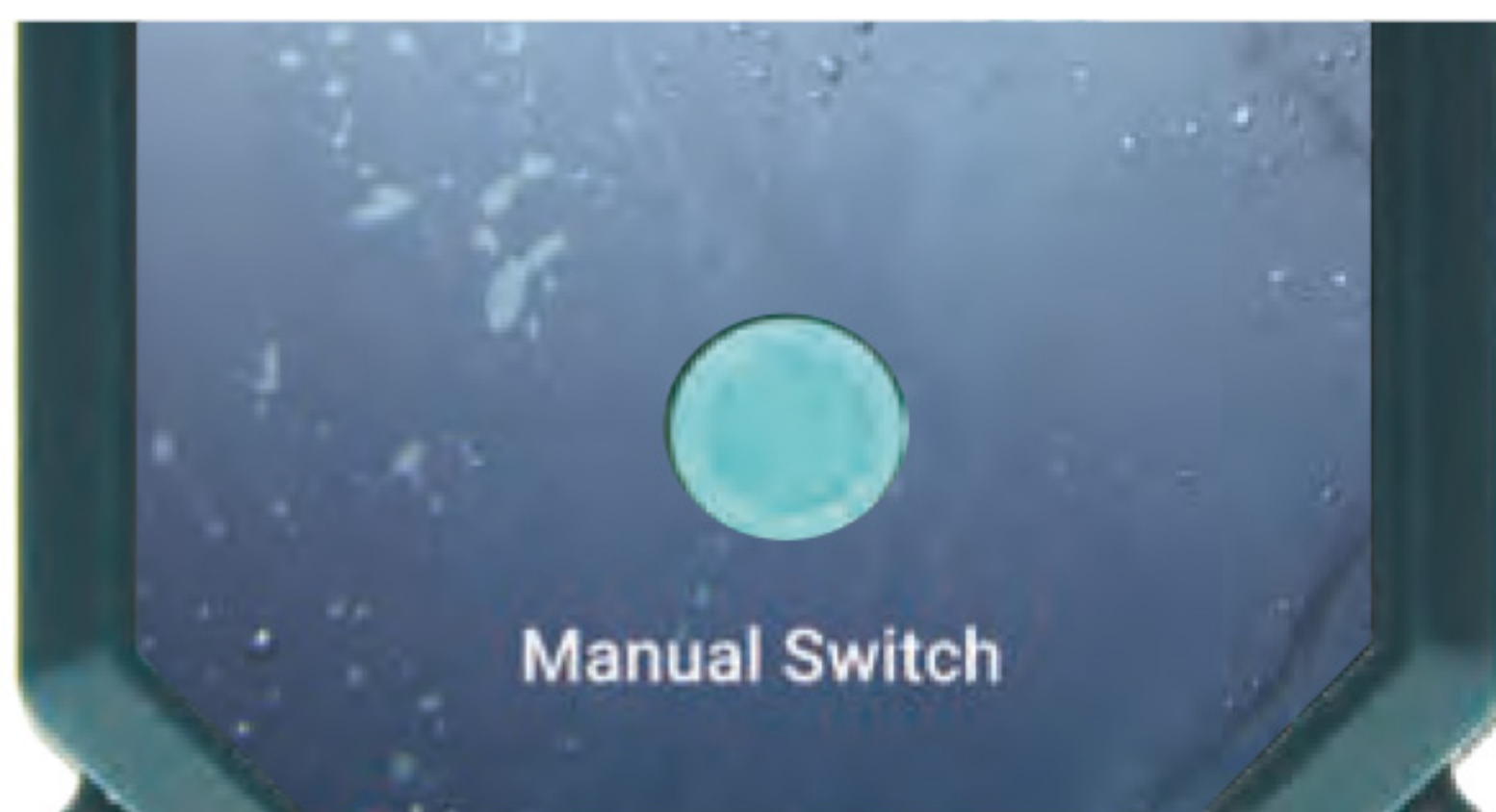
Flush Time is adjustable, Frequency - day/week/month

## CONTROLLER OPERATION

- Manually control with Smart Life App 🏠
- Manual switch button on unit (auto open/close)
- Set countdown with the Smart Life App 🏠



Use a 5V 2A power adapter with USB interface  
Power adapter uses a safe and secure waterproof connector.



To manually open and close the valve at the unit, press the Manual Switch button to toggle between fully open and fully closed.

\*NOTE In the event that your valve should lose power in the 'open' position, it will automatically close itself using a backup battery

## GENERAL SAFETY INFORMATION

Do not apply electrical power to the unit unless the unit is fully assembled and mounted. Failure to do so could result in personal injury and/or damage to the unit. Disconnect power source and depressurize the system before working on the unit. Failure to do so could result in personal injury. The downstream or discharge side of the ball valve must be directed to a safe area for collecting water and debris.

### ⚠️ WARNING

The motorized drive unit case is not capable of supporting any loads. Do not attempt to use the unit as a step. This will cause damage to the unit and could cause personal injury. Do not use in hazardous locations.

### ⚠️ CAUTION

It is recommended that eye protection be worn while servicing the system. Failure to do so could result in personal injury. Do not use the case as leverage when mounting this unit or tightening fittings. Use the wrenching flats on the valve body. It is highly recommended that a surge protector is used to prevent damage to the valve.

### ⚠️ WARNING

Always disconnect power source before working on this unit. Failure to do so could result in personal injury. The valve is under pressure. Discharge of pressurized water will occur during any cycling of the ball valve when unit is installed in the piping system. Eye protection is recommended.



## APP INSTALLATION & SETUP

Download the 'Smart Life' App and create a login



  
DOWNLOAD ON THE  
APP STORE

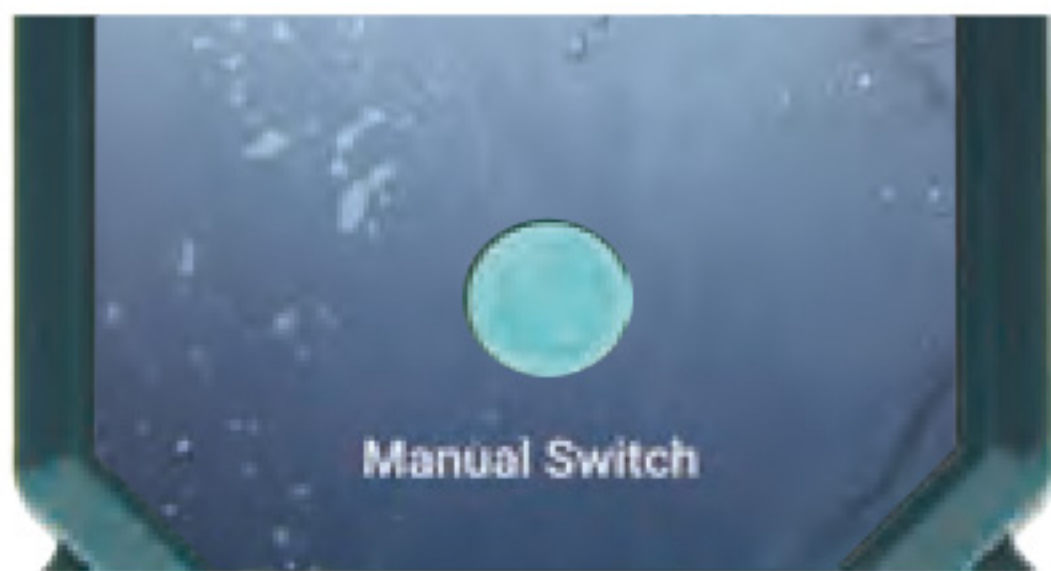
  
GET IT ON  
GOOGLE PLAY



 works with the  
Google Assistant

 WORKS WITH  
alexa

## Connecting your Smart Ball Valve to your Network



**1.** Press and hold the Manual Switch button on your Smart Ball Valve until the blue LED light blinks rapidly



**2.** Connect phone to the WiFi network you plan to use.



**3.** Open the App and tap '+' in the upper right corner



**4.** Select 'Add Manually' at the top

## WIFI OPTION SETUP (for Zigbee option use steps 5-8 on next page)



**5.** Scroll to 'Others' and choose Connector (WiFi)



**6.** Select WiFi and enter password



**7.** Confirm the blue LED light is blinking on the valve, check box on the screen and tap next



**8.** Tap 'Done' when device connects

## APP INSTALLATION & SETUP (CONTINUED)

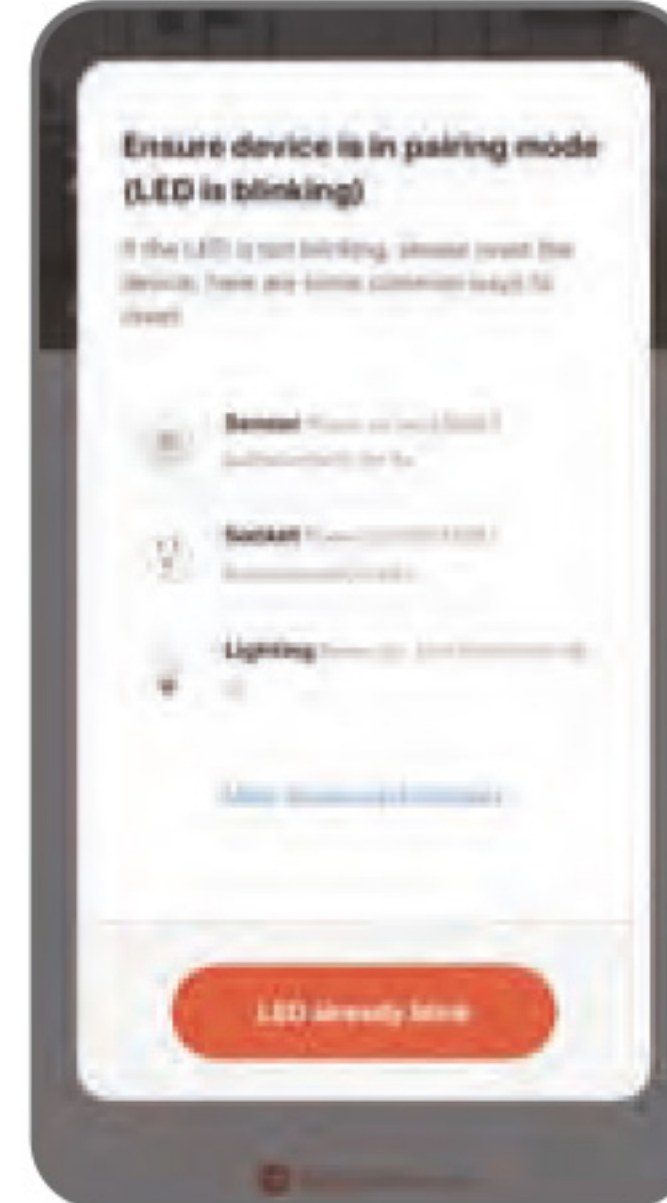
### ZIGBEE OPTION SETUP (for WiFi option use steps 5-8 on prior page)



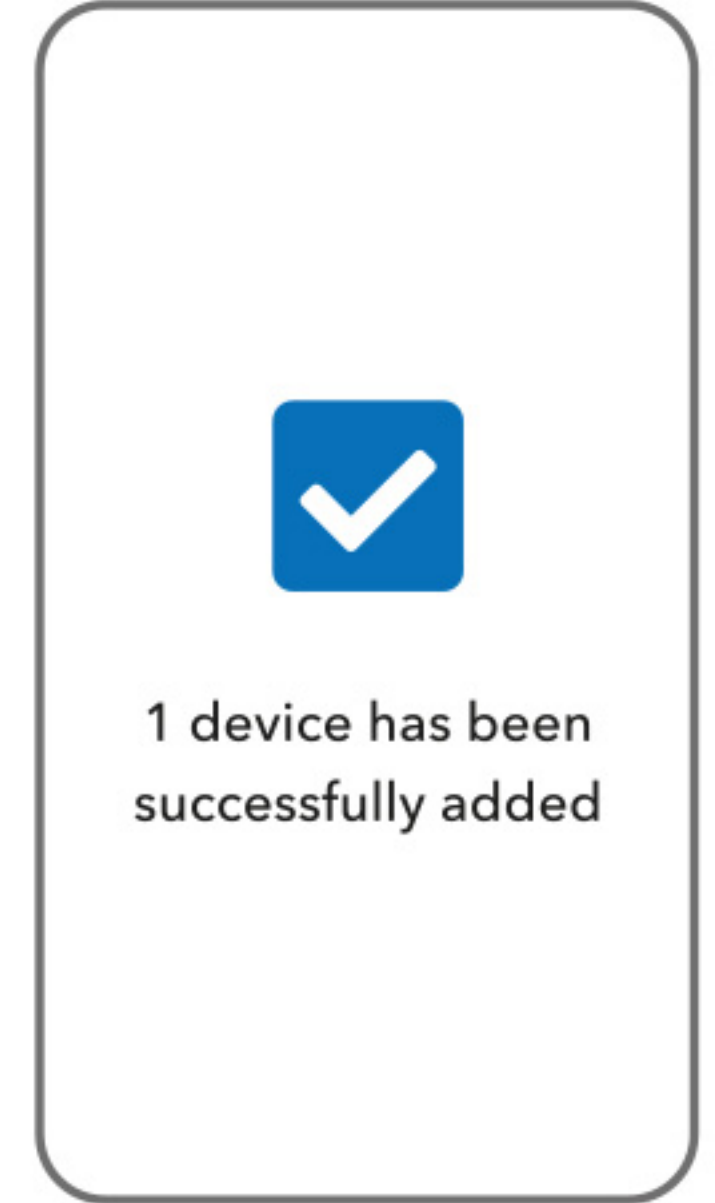
**5.** Scroll to 'Others' and choose Others (Zigbee) follow on app instructions



**6.** Open the gateway you just added and tap 'Add Subdevice'



**7.** Confirm the blue LED light is blinking, and tap 'LED Already Blink'



**8.** The gateway will scan for the device and add the Zigbee Timer Water Valve

## APP CONTROL

**CURRENT PERCENTAGE**  
This number shows what percentage the valve is currently open

**OFF**  
This will close the valve to 0%

**SCHEDULE**  
Schedule how often your valve will open and how long it stays open



**SET PERCENTAGE**  
You can set the flow rate between 0 - 100%

**MAX**  
This will open the valve to 100%

**COUNTDOWN**  
You can set an amount of time the valve stays open here